



SOLO[®] II HEADSET TOP

6566

USER
GUIDE



Thank you for ordering your Solo II headset top from Hello Direct.

You've made a wise choice in selecting a Solo II headset. This is a high quality, commercial grade set designed for heavy everyday use. With its soft adjustable materials that custom-fit your ear, no other headset on the market today comes close to matching Solo II's comfort. In fact, your Solo II headset is so lightweight, you can wear it all day, every day.

Solo II lets you keep both hands free to take notes, check files, even access your computer while you're on the phone—without getting neck and shoulder cramps from scrunching your handset between your ear and shoulder. You'll sound great to your callers, too, because your Solo II headset is equipped with a noise canceling microphone that won't pick up background noise. It transmits only your voice—clearly and naturally.

SETUP AND COMPATIBILITY

Your amplifier needs to be connected before you can use your headset.

The Solo II headset top plugs into the quick disconnect cable of your Hello Direct brand amplifier. Please refer to the Quick Setup Guide in your amplifier box.

SOUND QUALITY

Sound level in the headset is adjusted via your amplifier.

Again, please refer to the Quick Setup Guide in your amplifier box.

ANSWERING AND PLACING CALLS

You'll need to lift the handset off the cradle to begin your call, and put it back when you're through. (Our Touch-N-Talk, Item #1275, can help. Just pull the lever, and the Touch-N-Talk device raises the handset off the cradle.)

If your phone has a "headset jack" or switch, you won't need to take the handset off the cradle. Simply press the button to start and end your calls. (Usually this is the SPEAKERPHONE or LINE button. Check your telephone's manual for details.)

If your phone has a 2 prong (PBX) jack, our Modular to PBX Adapter, Item #1343, also lets you start and end calls with the press of a button.

Wearing the Solo II headset

HEADSET COMFORT

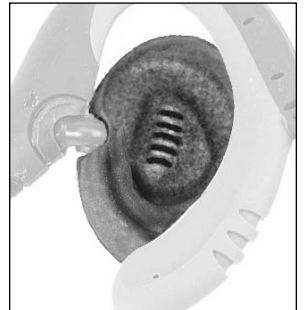
If you've never used a headset, wearing one may take some getting used to. Like wearing glasses for the first time, it will feel different and perhaps a little awkward at first. But once you're used to it, you won't want to give it up.

Give yourself some time to gradually get used to wearing your new headset. Use it 30 to 60 minutes a day for the first week, an hour or 2 a day for the second week, and 3 to 4 hours a day for the third week. By the end of the fourth week, you'll prefer using the headset for all your calls. Guaranteed!

Please read the installation instructions on the next page to get a secure and custom fit.

CHOOSING THE RIGHT EAR CUSHION

Your Solo II comes with two different ear cushions. Try them both to determine which is the most comfortable for you.



For maximum comfort and efficiency, we recommend you read ***all*** the information provided in this guide before using your new headset.

Installation instructions

1. FITTING YOUR SOLO II FOR EITHER EAR

The Solo II can be worn on either ear. To switch it to the other ear, simply rotate the speaker so that the Hello Direct logo rotates through the bottom of the earhook, and continue rotating until it faces the opposite side. (See Figure #1.)

Note: The speaker will not rotate 360 degrees. Do not force it past its stop position.

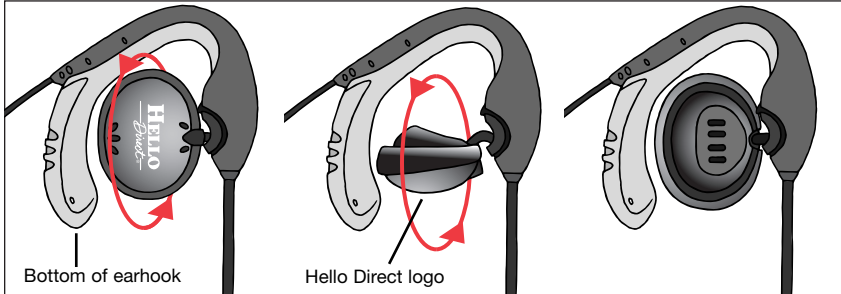


Figure #1

2. CUSTOMIZE THE FIT

Before putting the Solo II on, follow either the “Right Ear” or “Left Ear” figures below and give the earhook the proper starting bend:

TO WEAR ON THE RIGHT EAR

Bend into an “S” shape.

→ = Press with your finger here

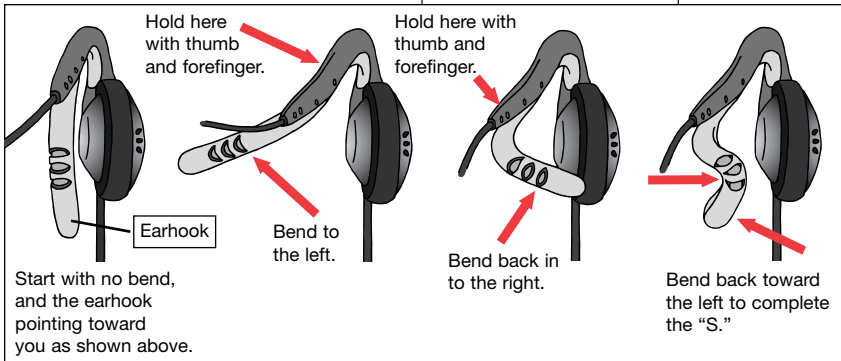



Figure #2 Right Ear

TO WEAR ON THE LEFT EAR

Bend into a "Z" shape.

 = Press with your finger here

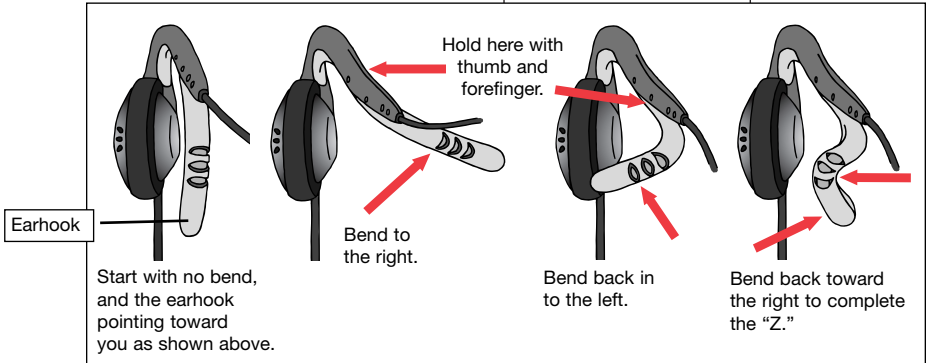


Figure #2 Left Ear

3. PREPARING TO PUT THE HEADSET ON

Swing the speaker out on its pivot, so it's not in the way (Figure #3A). While maintaining the bend, squeeze the flexible part of the earhook slightly closed (see Figure #3B). The intent is to make sure the inside shape of the earhook is smaller than your ear so it expands to your ear shape when you put it on.

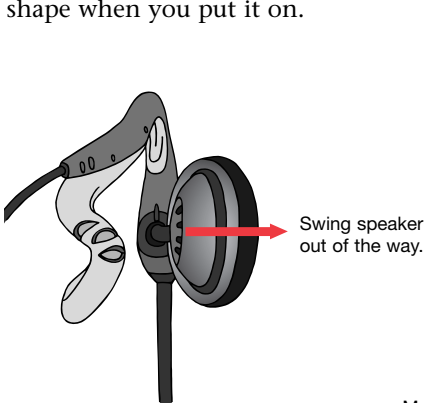


Figure #3A

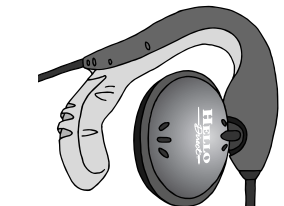


Figure #3B

